

LEGEND:

- BMPs
- Parcels with Private Stormwater Facilities
- Urbanized Area
- Water Bodies
- Parcels
- Matchline
- Watershed Designation
- Unimpaired Streams
- Impaired Streams
- HT Boundary
- SILVERDALE Boundary
- Storm Sewershed Swale
- Watersheds
- Planning Area

PARSING LEGEND:

- Non-Urbanized Drainage Area
- Parsed Area (See Note #2)
- Parsed Area/PennDot MS4 (Note #3)
- Parsed Area - Private
- Areas not containing Township MS4 Facilities
- Parsed Area - Sheet Flow From A Road Less than 300' From Stream
- Parsed Area - Urbanized Area Flowing to Unimpaired Stream and Not Within 5 Miles of Impaired Stream

STORM STRUCTURES:

- Inlet
- Endwall
- Manhole
- Outlet Control Structure
- Outfall to Impaired Waters or Waters Within 5 Miles of Impaired Waters (PRP MS4)
- Outfall to Unimpaired Waters (Other MS4)
- Observation Point
- Stormwater BMP/Basin (Typ)
- Drainage Pipes

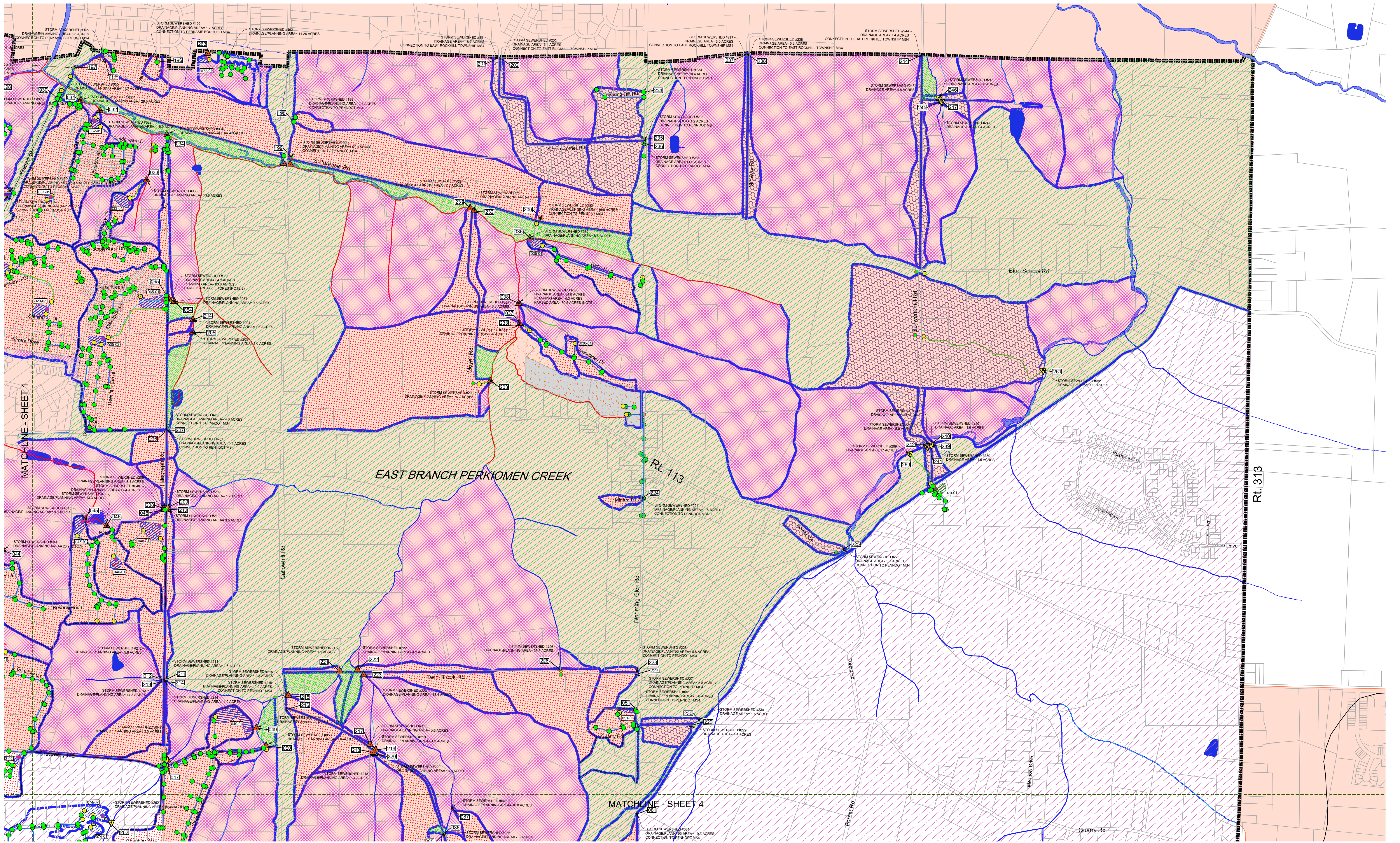
NOTES:

1. STREAM LOCATIONS AND IMPAIRMENT DESIGNATIONS ARE SHOWN BASED ON DATA PROVIDED BY PADEP AND HOSTED ON THE PADEP WEBSITE. STREAM LOCATIONS MAY NOT ACCURATELY REPRESENT PHYSICAL FIELD CONDITIONS. THIS OFFICE HAS MODIFIED STREAM AND WATERSHED LOCATIONS TO THE MOST ACCURATE CONTOURS AVAILABLE.
2. STORM SEWERSHED AREAS ARE PARSED TO EXCLUDE AREAS THAT BYPASS THE MS4 SYSTEM.
3. AREAS PARSED DRAINING TO PENNDOT MS4 OR OTHER MUNICIPALITIES CONTAIN NO TOWNSHIP STREETS OR FACILITIES.

NO.	DATE	REVISIONS
4	1-23-24	UPDATE PER NEW DEVELOPMENTS
3	8-16-21	UPDATE PER NEW DEVELOPMENTS
2	2-13-19	REVISE PER DEP COMMENTS
1	7-6-18	REVISE PER DEP COMMENTS

HILLTOWN TOWNSHIP
STORM SEWER MAP
 WYNN ASSOCIATES, INC.
 MUNICIPAL ENGINEERING
 211 W. Broad Street, Quakertown, PA 18951 Phone 215-536-7336 Fax 215-536-5361

DRAWING NO. **1**
 OF 4



LEGEND:

- BMPs
- Parcels with Private Stormwater Facilities
- Urbanized Area
- Water Bodies
- Parcels
- Matchline
- Watershed Designation
- Unpaired Streams
- Impaired Streams
- HT Boundary
- SILVERDALE
- BOUNDARY
- Storm Sewershed
- Swale
- Watersheds
- Planning Area

PARSING LEGEND:

- Non-Urbanized Drainage Area
- Parsed Area (See Note #2)
- Parsed Area - Urbanized Area Flowing to Unpaired Stream and Not Within 5 Miles of Impaired Stream
- Parsed Area - Private Areas not containing Township MS4 Facilities
- Parsed Area - Sheet Flow From A Road Less than 300' From Stream
- Parsed Area - Urbanized Area Flowing to Unpaired Stream and Not Within 5 Miles of Impaired Stream

STORM STRUCTURES:

- Inlet
- Endwall
- Headwall
- Manhole
- Outlet Control Structure
- Outfall to Impaired Waters or Waters Within 5 Miles of Impaired Waters (PRP MS4)
- Outfall to Unpaired Waters (Other MS4)
- Observation Point
- Stormwater BMP/Basin (Typ)
- Drainage Pipes

NOTES:

1. STREAM LOCATIONS AND IMPAIRMENT DESIGNATIONS ARE SHOWN BASED ON DATA PROVIDED BY PADEP AND HOSTED ON THE PADEP WEBSITE. STREAM LOCATIONS MAY NOT ACCURATELY REPRESENT PHYSICAL FIELD CONDITIONS. THIS OFFICE HAS MODIFIED STREAM AND WATERSHED LOCATIONS TO THE MOST ACCURATE CONTOURS AVAILABLE.
2. STORM SEWERED AREAS ARE PARSED TO EXCLUDE AREAS THAT BYPASS THE STORM SYSTEM.
3. AREAS PARSED DRAINING TO PENNDOT MS4 OR OTHER MUNICIPALITIES CONTAIN NO TOWNSHIP STREETS OR FACILITIES.

NO.	DATE	REVISIONS
4	1-23-24	UPDATE PER NEW DEVELOPMENTS
3	8-16-21	UPDATE PER NEW DEVELOPMENTS
2	2-13-19	REVISE PER DEP COMMENTS
1	7-6-18	REVISE PER DEP COMMENTS

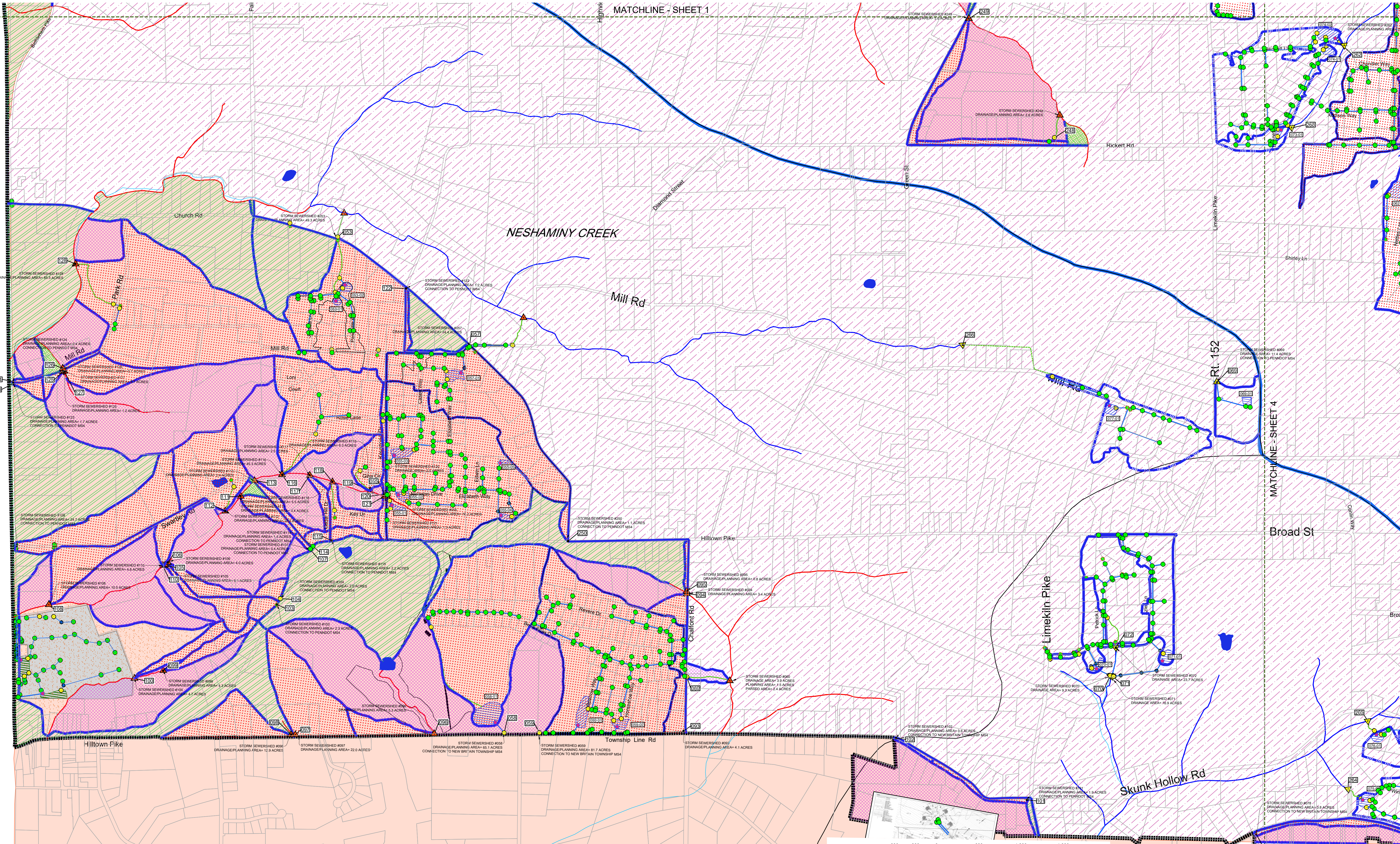
**HILLTOWN TOWNSHIP
STORM SEWER MAP**

WYNN ASSOCIATES, INC.
MUNICIPAL ENGINEERING

211 W. Broad Street, Quakertown, PA 18951 Phone 215-536-7336 Fax 215-536-5361

DWN BY: KAD CJP BY: CJP DATE: JUL 13, 2021 SCALE: 1" = 600' JOB NO.: 03-099

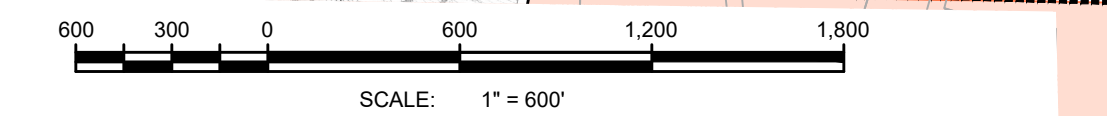
DRAWING NO. **2** OF 4



- LEGEND:**
- BMPs
 - Parcels with Private Stormwater Facilities
 - Urbanized Area
 - Water Bodies
 - Parcels
 - Matchline
 - Watershed Designation
 - Unimpaired Streams
 - Impaired Streams
 - HT Boundary
 - SILVERDALE Boundary
 - Storm Sewershed
 - Swale
 - Watersheds
 - Planning Area

- PARSING LEGEND:**
- Non-Urbanized Drainage Area
 - Parsing Area (See Note #2)
 - Parsing Area/PennDot MS4 (Note #3)
 - Parsing Area - Private Areas not containing Township MS4 Facilities
 - Parsing Area - Sheet Flow From A Road Less than 300' From Stream
 - Parsing Area - Urbanized Area Flowing to Unimpaired Stream and Not Within 5 Miles of Impaired Stream

- STORM STRUCTURES:**
- Inlet
 - Endwall
 - Headwall
 - Manhole
 - Outlet Control Structure
 - Outfall to Impaired Waters or Waters Within 5 Miles of Impaired Waters (PRP MS4)
 - Outfall to Unimpaired Waters (Other MS4)
 - Observation Point
 - Stormwater BMP/Basin (Typ)
 - Drainage Pipes



NOTES:

- STREAM LOCATIONS AND IMPAIRMENT DESIGNATIONS ARE SHOWN BASED ON DATA PROVIDED BY PADEP AND HOSTED ON THE PADEP WEBSITE. STREAM LOCATIONS MAY NOT ACCURATELY REPRESENT PHYSICAL FIELD CONDITIONS. THIS OFFICE HAS MODIFIED STREAM AND WATERSHED LOCATIONS TO THE MOST ACCURATE CONTOURS AVAILABLE.
- STORM SEWERSHED AREAS ARE PARSED TO EXCLUDE AREA THAT BYPASSES POTMS SYSTEM.
- AREAS PARSED DRAINING TO PENNDOT MS4 OR OTHER MUNICIPALITIES CONTAIN NO TOWNSHIP STREETS OR FACILITIES.

NO.	DATE	REVISIONS
4	1-23-24	UPDATE PER NEW DEVELOPMENTS
3	8-16-21	UPDATE PER NEW DEVELOPMENTS
2	2-13-19	REVISE PER DEP COMMENTS
1	7-6-18	REVISE PER DEP COMMENTS

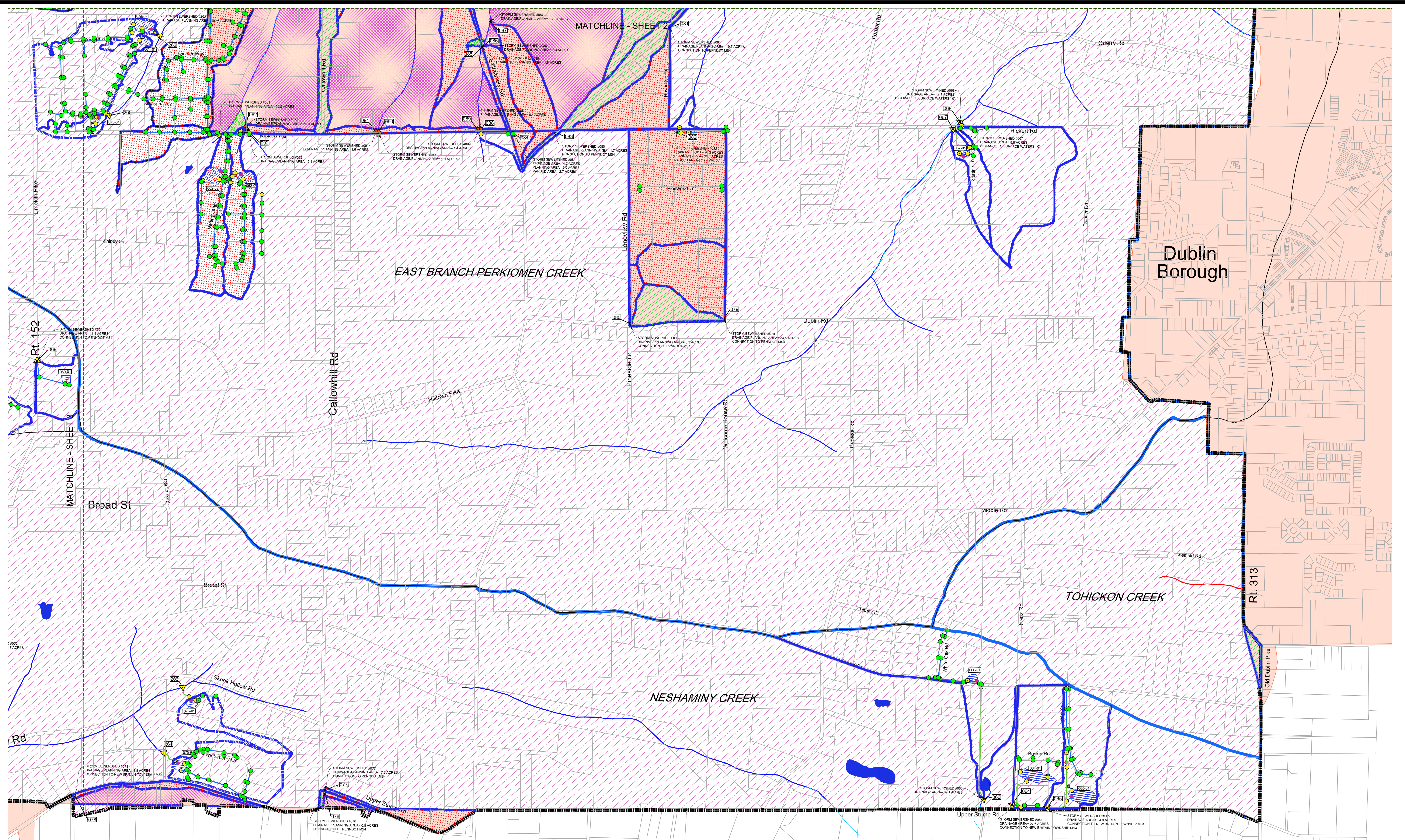
**HILLTOWN TOWNSHIP
STORM SEWER MAP**

WYNN ASSOCIATES, INC.
MUNICIPAL ENGINEERING

211 W. Broad Street, Quakertown, PA 18951 Phone 215-536-7336 Fax 215-536-5361

DWN BY: DAD CJP BY: CJP DATE: JUL 13, 2021 SCALE: 1" = 600' JOB NO.: 03-099

DRAWING NO. **3** OF 4



LEGEND:

- BMPs
- Parcels with Private Stormwater Facilities
- Urbanized Area
- Water Bodies
- Parcels
- Matchline
- Watershed Designation
- Unimpaired Streams
- Impaired Streams
- HT Boundary SILVERDALE
- Boundary SILVERDALE
- Storm Sewershed
- Swales
- Watersheds
- Planning Area

PARSING LEGEND:

- Non-Urbanized Drainage Area
- Parsed Area (See Note #2)
- Parsed Area/PennDot MS4 (Note #3)
- Parsed Area - Private Areas not containing Township MS4 Facilities
- Parsed Area - Sheet Flow From A Road Less than 300' From Stream
- Parsed Area - Urbanized Area Flowing to Unimpaired Stream and Not Within 5 Miles of Impaired Stream

STORM STRUCTURES:

- Inlet
- Endwall
- Headwall
- Manhole
- Outlet Control Structure
- Outfall to Impaired Waters or Waters Within 5 Miles of Impaired Waters (PRP MS4)
- Outfall to Unimpaired Waters (Other MS4)
- Observation Point
- Stormwater BMP/Basin (Typ)
- Drainage Pipes

NOTES:

- STREAM LOCATIONS AND IMPAIRMENT DESIGNATIONS ARE SHOWN BASED ON DATA PROVIDED BY PADEP AND HOSTED ON THE PADEP WEBSITE. STREAM LOCATIONS MAY NOT ACCURATELY REPRESENT PHYSICAL FIELD CONDITIONS. THIS OFFICE HAS MODIFIED STREAM AND WATERSHED LOCATIONS TO THE MOST ACCURATE CONTOURS AVAILABLE.
- STORM SEWERED AREAS ARE PARSED TO EXCLUDE AREA THAT BYPASSES PHMSA SYSTEM.
- AREAS PARSED DRAINING TO PENNDOT MS4 OR OTHER MUNICIPALITIES CONTAIN NO TOWNSHIP STREETS OR FACILITIES.

NO.	DATE	REVISIONS
4	1-23-24	UPDATE PER NEW DEVELOPMENTS
3	8-16-21	UPDATE PER NEW DEVELOPMENTS
2	2-13-19	REVISE PER DEP COMMENTS
1	7-6-18	REVISE PER DEP COMMENTS

SCALE: 1" = 600'

**HILLTOWN TOWNSHIP
STORM SEWER MAP**

WYNN ASSOCIATES, INC.
MUNICIPAL ENGINEERING

211 W. Broad Street, Quakertown, PA 18951 Phone 215-536-7336 Fax 215-536-5361

DWN BY: DAD CJP C.J.G. DATE: JUL 13, 2021 SCALE: 1" = 600' JOB NO.: 03-099

DRAWING NO. **4** OF 4